



Safran Project

# Overview



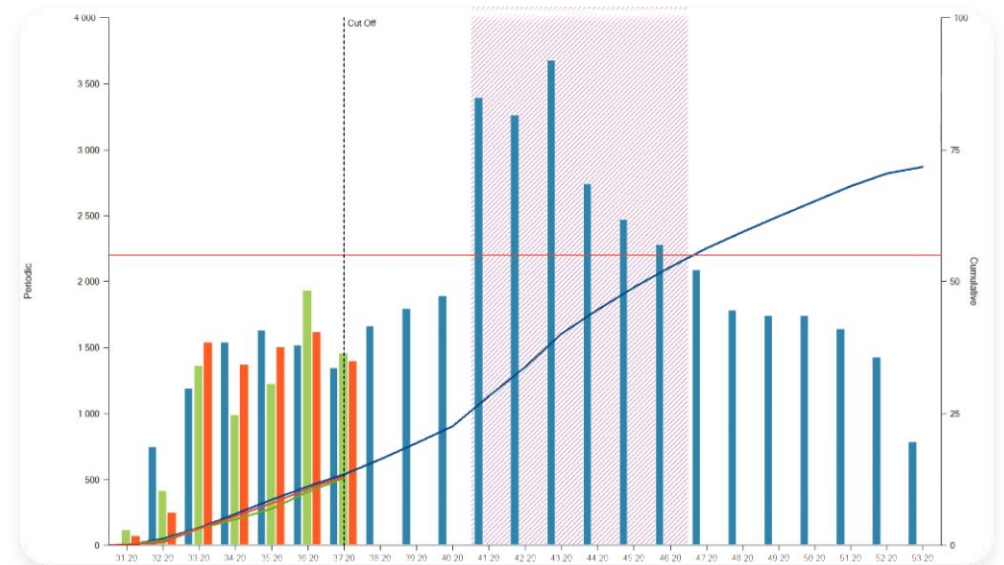
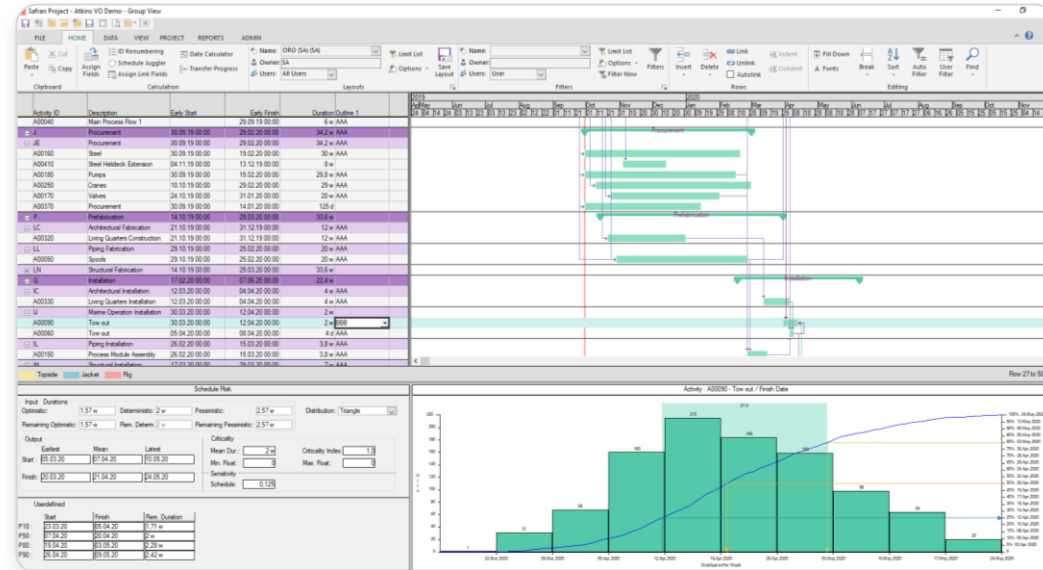
# Safran Project

## Overview

- Plan, schedule and control
- Supports all phases of a project
- Market leader in Norway

## Key Features

- All functions in one GUI
- Powerful EVM reports and reporting package
- Scope control and change register
- Advanced resource leveling
- Portfolio scheduling
- Schedule Risk Analysis





# Safran Project – Functional Description

## Overview

Safran can hold 100 000+ activities in one project and still maintain order. The user interface is based on a ribbon menu as known from the MS Office suite. Your main editor for working in the schedule, the Bar chart Editor, has excellent options for grouping, filtering, color codes and conditional formatting to use in layouts to support you with your planning work.

## Multi-User – Multi Project

Safran Project supports a multi-user environment where several planners can work on a schedule simultaneously. To prevent sync issues the system uses user “locks” on parts of a project. For major updates to a project different access levels can lock a project for editing while the master planner is carrying out critical schedule operations such as setting baseline or status updates. The system also fully supports portfolio planning and group projects where it is possible to open several projects in a group and edit them all in one screen.

## Full CPM Scheduling with EVM

Safran Project is based on world-wide acknowledged methods and principles such as Critical Path Method (CPM) scheduling and Earned Value Method analysis (EVM). CPM and EVM are integrated throughout the system and provides you with useful tools whether you are scheduling, reporting or analysing issues. This means that Safran can calculate future values and address important situations before they become actual hazards to the project revenue or capacity for being completed.

## Resources

Activities can be loaded with resources – hours, manpower or cost, to provide a full picture of the scope of the project. Resource availability can be set up per resource category for given periods of time to provide an accurate picture of what your limitations are. Resource levelling can be configured by the system or carried out manually with support of live histograms and drill down functionality on the biggest resource drivers in your schedule.

## Scope Control

Safran Project support three scopes used at the same time – Baseline, Total and Current. The Baseline scope is locked to what was in the schedule at the snapshot of your Baseline. Total scope includes all work in the schedule, while the Current scope keeps track of remaining work as your project progresses. The three scopes can be configured to tailor the needs of your project organization.

## Baseline

Setting and maintaining baselines is easy and is supported with several great features. The baseline log keeps track of all your baseline updates. The ten most recent baselines are available to use in reporting and layouts. An existing baseline can be expanded on with a partial baseline. You can also roll back a baseline if needed.

## Change Register

Keeping track of changes is crucial for project success. The change register allows for keeping any overruns or delays documented and sorted, whether it is a request for change, a variation order, an internal change or a change that is carried out by subcontractors. Together with the option to lock your scope after setting your baseline, this will ensure that all changes will be easily identifiable throughout the duration of your project.

## Full Project History

As your project progresses, volume progress and time progress is periodized and stored in the project database. This allows you to go back in time and see specific data for what happened at a given snapshot in some reports.

## User Defined Fields

There are over 250 user definable fields available across eight types of fields (free text, drop down list, date, number etc.). These fields are called User fields. User fields can be standardized across the database and utilized by all projects to support standardization of company information, reporting and work methods. Enterprise fields are user fields that can be utilized on project header level to support portfolio planning and enterprise level reporting.

## Reporting

A full suite of different report types comes built into the scheduling tool. Popular reports such as Bar chart (Gantt), Histogram/S-Curve, Progress Summary Report (PSR), Bulls Eye Chart, Pie Chart and Schedule Health Check are among a few of the report types. The reports are important tools that allow you to compare baseline values to actual values, identify overruns and issues, and are of great use when you need to make decisions on what actions to take in your projects.

Each report type has a wizard that allows the user to configure and customize the report to his needs. The configuration is saved so you can build up a library of configurations of the different categories of reports. These user configured reports are available to use across the database by all projects and users. Reports can be combined in report packages. This allows you to do all your weekly or monthly (or any other interval) reporting with one click.

## Scenarios and Alternative Schedules

You can operate with up to ten sets of alternative schedules within one project. This provides you with an extra set of dates for each alternative schedule you set up. For every set of alternative schedules, you can choose which activities should exist or not. Different scenarios can also be set up by duplicating the schedule and adding or cutting activities. The different scenarios can then be reported on together in a group side by side.

## Forecast and Revised schedule

When your project is in progress the analysis engine can provide you with forecasts based upon your actual project performance to date. Additionally, a revised schedule is available and works in a similar manner as the standard Baseline, this can be a useful tool to utilize when you need a snapshot outside of your regular baseline window to compare your plan against.

## P6 and MS Project compatible

Safran Project supports importing and exporting to and from file formats from Microsoft Project XML and Primavera P6 XER. Standard Windows functionality such as copy and paste to and from Excel is also supported. Several other imports and exports from text files (csv format) are available for handling progress, resources, activities, links and much more.

## Advanced Modules

Safran Project can be expanded with a few modules not included in the standard:

**Schedule Risk Analysis** – A powerful Monte Carlo simulation on your schedule to determine how robust your schedule is.

**Integrated Planning** – A portfolio planning solution with support for internal transferring and mapping of data between projects.

**Frame Agreements** – Integrate subcontracted work in frame agreements

**Safran API, Safran Integrator for: SAP, IFS and ILAP**

# Some of our customers



Hydro

VATTENFALL



Statnett



BOLIDEN



ConocoPhillips

ABB



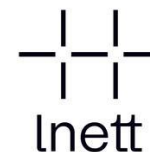
Shaping the future.

arctech



vår energi

equinor



WorleyParsons  
resources & energy

AkerSolutions™



subsea 7®

aibel®

KVERNER™

KCA DEUTAG

MEYER TURKU  
SHIPYARD 1797



Navantia



Archer  
The well company



APPLY SØRÇO

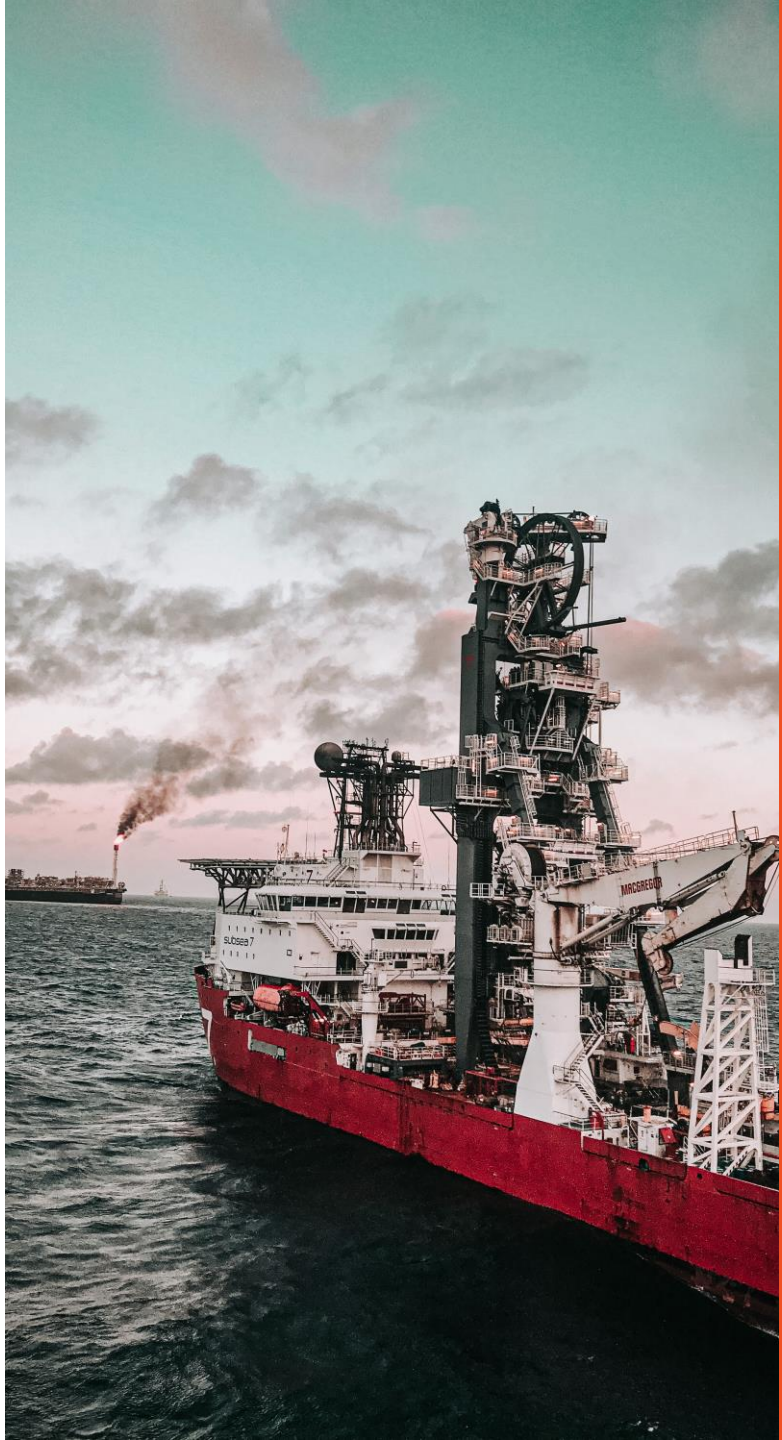


FOSEN YARD  
MAKES THE FUTURE AT SEA



ODFJELL DRILLING

DEEPOCEAN



# Safran Project

[www.safran.com](http://www.safran.com)