



Safran Planner

Overview



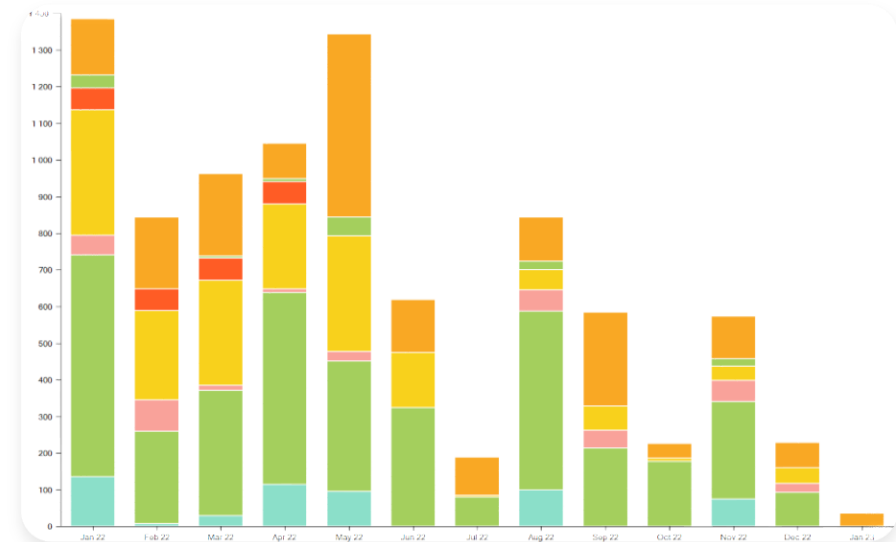
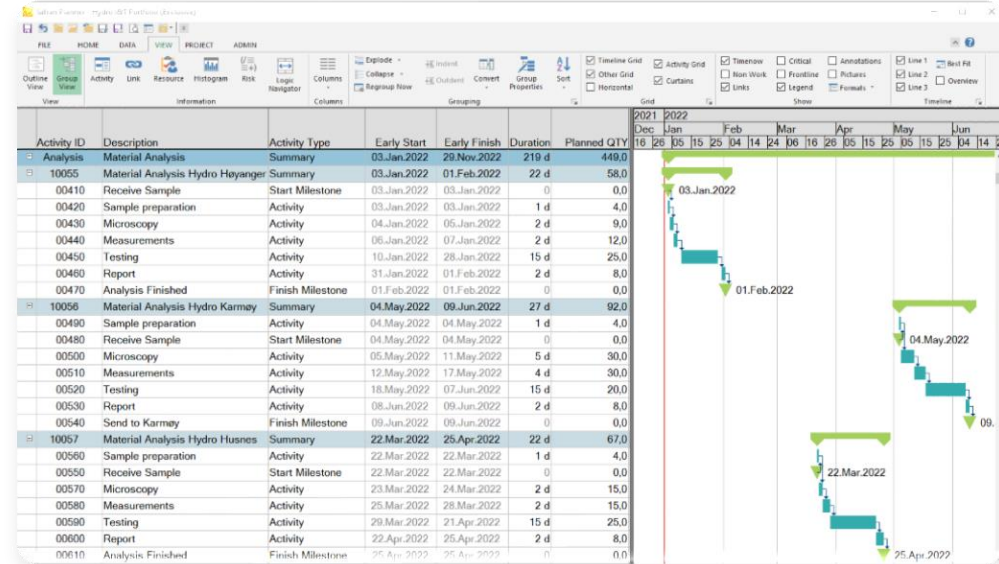
Safran Planner

Overview

- Easy to use scheduling tool
- Powerful feature set
- Flexible

Key Features

- Gantt Charts and Histograms
- Comparison against baseline
- Resource scheduling
- Portfolio scheduling
- Schedule Risk Analysis





Safran Planner – Functional Description

Overview

Safran Planner can hold 100 000+ activities in one project and still maintain order. The user interface is based on a ribbon menu as known from the MS Office suite. Your main editor for working in the schedule, the Barchart Editor, has excellent options for grouping, filtering, color codes and conditional formatting to use in layouts to support you with your planning work.

Powerful Information Views

There are several information views in the Bar chart Editor that normally are docked in the main Safran Planner application window. In Safran Planner you can pop out any of the information views in a standalone window. The information view remains live in-sync with what you are working on in the Bar chart Editor. This means that you can have a full screen histogram on one screen and the activities Gantt chart on another screen both in-sync as you are working on the schedule.

Multi-User

Safran Planner supports a multi-user environment where several planners can work on a schedule simultaneously. To prevent sync issues the system uses user "locks" on parts of a project. For major updates to a project different access levels can lock a project for editing while the master planner is carrying out critical schedule operations such as setting baseline or status updates.

Multi Project

The system also fully supports group projects where it is possible to open several projects in a group and edit them all in one screen. Linking activities between projects or reporting across all projects in a group is as easy to do as if you were working in a single project.

Full CPM Scheduling

Safran Planner is based on world-wide acknowledged scheduling methods and principles such as Critical Path Method (CPM) scheduling. CPM is integrated throughout the system and provides you with useful tools whether you are scheduling or reporting.

Resources

Activities can be loaded with resources – hours, manpower or cost, to provide a full picture of the scope of the project. The resource view in the Bar chart Editor lets you to see live updates on a resource histogram while you are working in the schedule. The resource histogram is also interactive, so you can jump directly to activities causing peaks in the project's resource load. This is a very useful tool for resource levelling.

Baseline and Progress

You can maintain a baseline in your schedule by setting comparison dates. This gives you control over slippages and changes to your schedule as your project progresses. Time based progress can be fed into the schedule and calculated to show remaining work.

User Defined Fields

There are over 250 user definable fields available across eight types of fields (free text, drop down list, date, number etc.). These fields are called User fields. User fields can be standardized across the database and utilized by all projects to support standardization of company information, reporting and work methods. Enterprise fields are user fields that can be used on project header level to support portfolio planning and enterprise level reporting.

Reporting

You can set up reports in the Bar chart Editor or the Editor Histogram. With the Bar chart report you can report on milestones, overall progress, compare against baseline or view details down to activity level. The Histogram let's you report on the workload of your project and is a great tool to level your resources and make sure you don't exceed any limitations. Switching from hours to manpower means you can get an easy overview of your manning needs for the project.

Each report type has a wizard that allows the user to configure and customize the report to his needs. The configuration is saved so you can build up a library of different configurations of the reports. These user configured reports are available to use across the database by all projects and users. Reports can be combined in report packages. This allows you to do all your weekly or monthly (or any other interval) reporting with one click.

Scenarios

Different schedule scenarios can also be set up by duplicating the project and adding or removing activities. The different scenarios can then be reported on together in a group, side by side or on their own.

P6 and MS Project compatible

Safran Planner supports importing and exporting to and from file formats from Microsoft Project XML and Primavera P6 XER. Standard Windows functionality such as copy and paste to and from Excel is also supported. Several other imports and exports from text files (csv format) are available for handling progress, resources, activities, links and much more.

Schedule Risk Analysis

Schedule Risk Analysis is available as an add-on to Safran Planner. With this module you can run powerful Monte Carlo simulations on your project to make assessments on how robust your schedule is. Schedule Risk is a quantitative analysis where you define optimistic, pessimistic and deterministic estimates for your activity durations. You can select between several different distributions to simulate on per activity. Thousands of simulations are run in a few seconds, and it's easy to review, adjust and simulate again. With this tool you can schedule, simulate, analyse and reschedule until your duration risk is at an acceptable level. Making assumptions on how likely you are to meet milestones has never been easier.

Some of our customers



Hydro

VATTENFALL



Statnett



BOLIDEN



ConocoPhillips

ABB

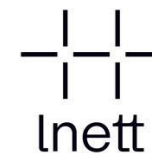


arctech



vår energi

equinor



WorleyParsons
resources & energy



subsea 7

aibel

KVERNER

KCA DEUTAG

MEYER TURKU
SHIPYARD 1797



Navantia



Archer
The well company



APPLY SØRÇO



FOSEN YARD
MAKES THE FUTURE AT SEA



ODFJELL DRILLING

DEEPOCEAN



Safran Planner

www.safran.com