

# Managing remaining scope

# Managing remaining scope

- Volume- and time progress

General	Constraints/Schedule Options	Status	Scheduled	Reference	Text	Date	Flag	Decimal	Duration	Outline Codes	Computed	EVM	Linked Documents
Status Live Timenow = 23.01.23			Status Current Plan Cutoffdate = 20.08.23			Scopes							
Started:	<input type="text"/>	Duration:	<input type="text" value="180 d"/>	Always On Schedule:	<input type="checkbox"/>	Started:	<input type="text" value="01.02.23"/>	Physical %:	<input type="text" value="90"/>	Original:	<input type="text"/>		
Finished:	<input type="text"/>	Remaining Duration:	<input type="text"/>	Finished:	<input type="text"/>	Current Rem. Dur.:	<input type="text"/>	Baseline:	<input type="text"/>				
Physical %:	<input type="text"/>	Calculated %:	<input type="text"/>	Total:	<input type="text"/>								
Suspend Date:	<input type="text"/>	Calculated Rem. Dur.:	<input type="text" value="180 d"/>										
Resume Date:	<input type="text"/>												

- Timenow
- Using assign field formulas to do schedule updates
- Scheduling the remaining scope putting the live plan on schedule without having to move timenow
- Remaining scope
- Remaining duration



# Remaining scope

- Qty or cost remaining of the budget based on the reported volume progress (ref cut off current plan) or time progress (ref timenow live plan)  
(Remaining Scope = Budget – Earned)

2023																								
Jul					Aug				Sep					Oct				Nov						
27	28	29	30	31	32	33	34	35	36	37	38	39	40	41	42	43	44	45	46	47	48			
								Cut-off 20.08.23																
450 hrs					30%															450 hrs				

- Earned = 450 hrs \* 0,3 = 135 hrs  
Remaining = 450 hrs – 135 hrs = 315 hrs



# Remaining duration

- Duration remaining of the total duration based on the reported time progress, ref timenow live plan  
(Remaining duration = Duration – Completed dur)

2023																						
Jul				Aug				Sep				Oct				Nov						
27	28	29	30	31	32	33	34	35	36	37	38	39	40	41	42	43	44	45	46	47	48	
							Cut-off 20.08.23															
10% PC								30%				60 d days										

- Completed dur = 60 days \* 0,1 = 6 days  
Remaining = 60 days – 6 days = 54 days
- Remaining duration is the time between Early Start and Early Finish
- Duration is the time between Implied Start to Early Finish



Formula to update the % Complete (PC) field (time progress) setting it equal to Actual % (volume progress)

Assign Fields

Formula : Set % Complete (Actual %)  From other users

Formula

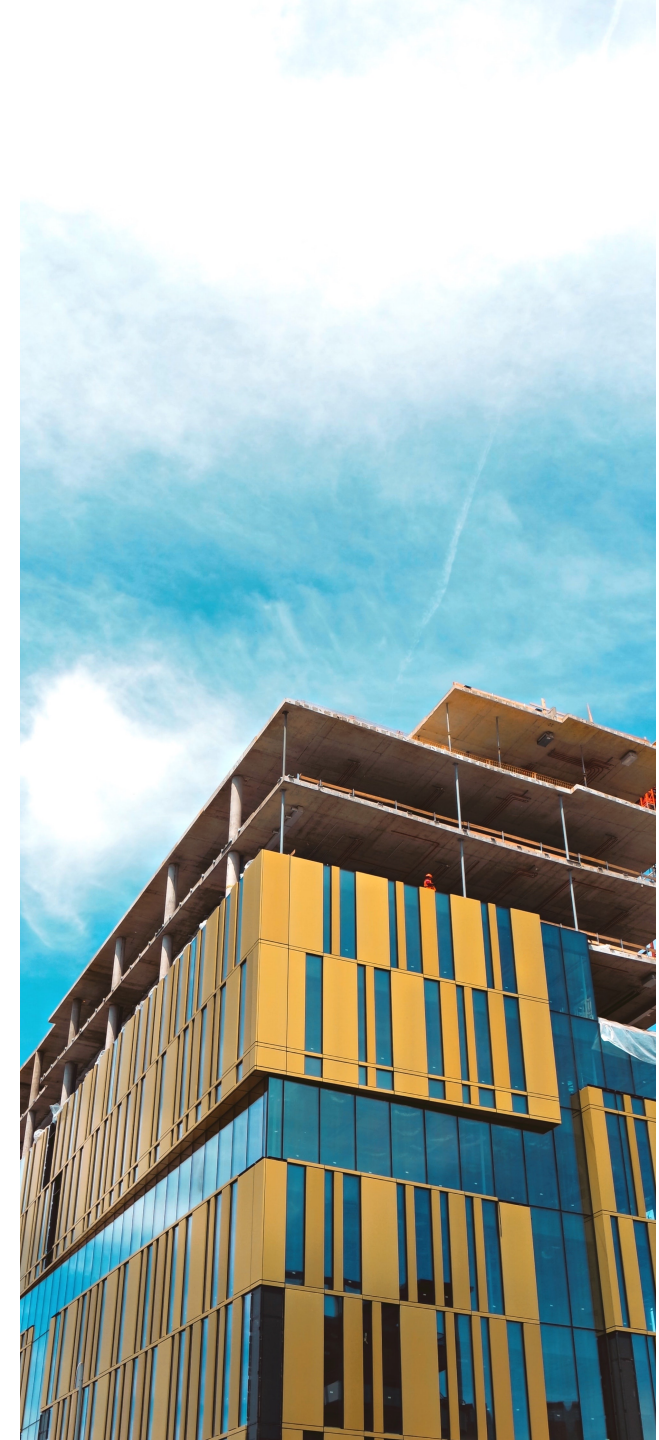
% Complete (PC) =

(	Expression	)	Operator
	Actual %		

Duration Format: None  Use Calendar Calendar : Activity's

Selection  Selected rows

Number of activities to be updated : 9  
Total number of activities in plan : 9



Formula to calculate the % Complete (PC) field (time progress) to set performance factor (PF) or performance index (CPI) to 1.

Assign Fields

Formula : Set % Complete (PF 1)  From other users New... Save As... Delete

Formula

% Complete (PC) =

(	Expression	)	Operator
	Expended QTY		/
	Planned QTY		*
	100		

Add Row Insert Row Delete Row Clear All Rows

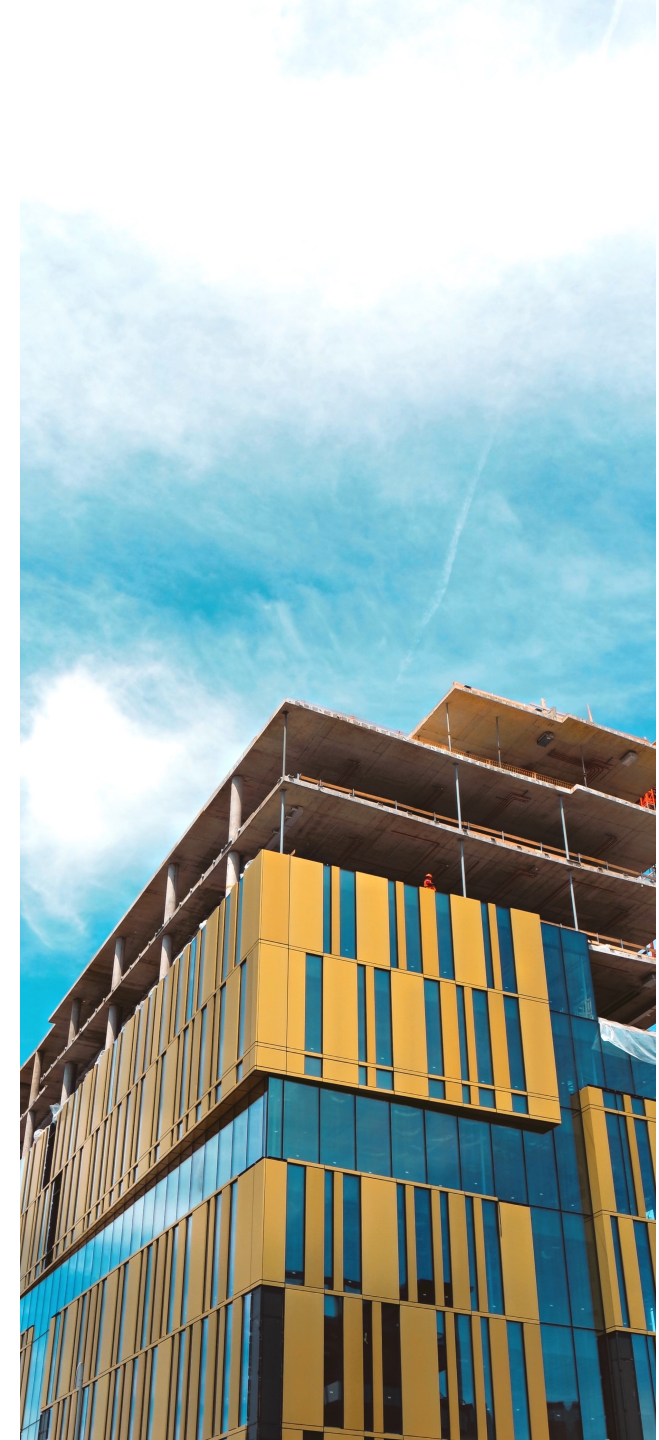
Duration Format: None  Use Calendar Calendar : Activity's

Selection  Selected rows Filter...

Number of activities to be updated : 9  
Total number of activities in plan : 9

Execute Close Preview...

Used when doing budget updates or reviews to distribute the remaining scope based on budget and expended (expended = earned) over the remaining duration. Consider updating the Actual % (volume progress) to reflect the same (current plan).



Assign Fields

Formula : Set Actual Start  From other users

Formula

Actual Start =

(	Expression	)	Operator
⌵	Current Actual Start ⌵	⌵	⌵

Duration Format: None  Use Calendar Calendar : Activity's

Selection  Selected rows

Number of activities to be updated : 9  
Total number of activities in plan : 9



**Assign Fields** [Close]

Formula :   From other users

Formula

=

(	Expression	)	Operator
<input "="" type="text" value="("/>	<input type="text" value="Current Actual Finish"/>	<input type="text" value=")"/>	<input type="text" value=""/>

Duration Format:   Use Calendar Calendar :

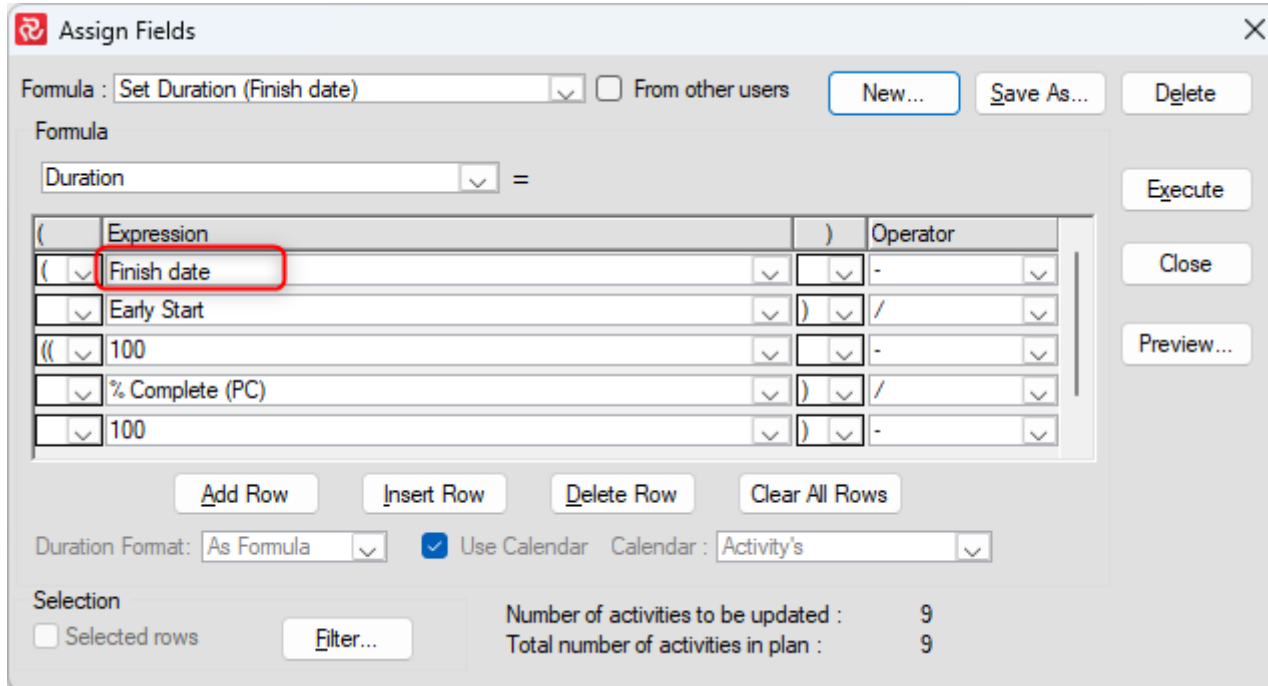
Selection  Selected rows

Number of activities to be updated : 9  
Total number of activities in plan : 9





Formula to calculate the total duration based on finish date input. Date fields can be used as input to update multiple activities with different finish dates planned. Run the formula multiple times until all activities in a path get the correct duration. Used for FS and SS logic. For FF logic the Start date must be the input value (Early Finish – Start date).



Assign Fields

Formula : Set Duration (Finish date)  From other users

Formula

Duration =

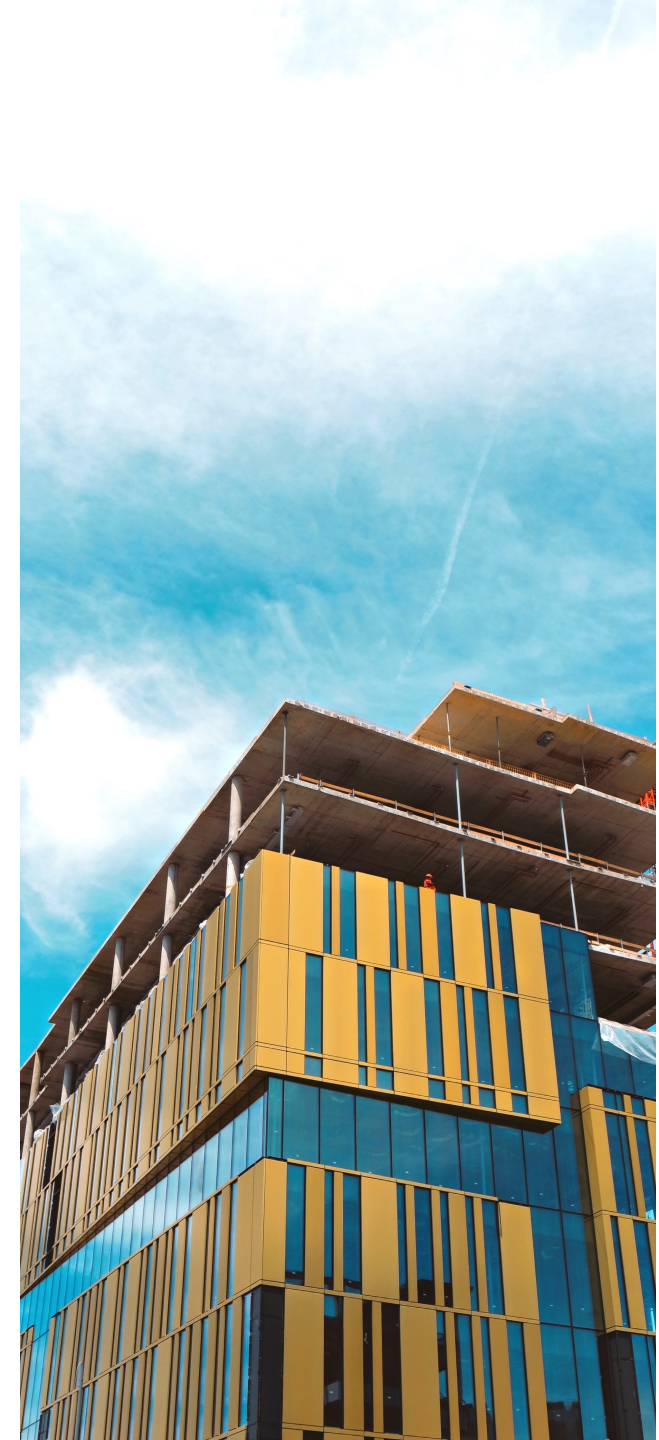
(	Expression	)	Operator
(	Finish date	)	-
	Early Start	)	/
((	100	)	-
	% Complete (PC)	)	/
	100	)	-

Duration Format: As Formula  Use Calendar Calendar : Activity's

Selection  Selected rows

Number of activities to be updated : 9  
Total number of activities in plan : 9

Last line of the formula, not present in the picture, is 0,5 in the expression column



Formula to calculate the total duration based on the planned load/mpwr to complete the scope and work hours per day. Decimal fields can be used as input to update multiple activities.

Assign Fields

Formula : Set Duration (Load Mpwr Day)  From other users New... Save As... Delete

Formula

Duration =

(	Expression	)	Operator
(	1	)	/
	Mpwr	)	*
(	Planned QTY	)	/
	Hours per day	)	

Add Row Insert Row Delete Row Clear All Rows

Duration Format: Days  Use Calendar Calendar : Activity's

Selection  Selected rows Filter... Number of activities to be updated : 9  
Total number of activities in plan : 9

Execute Close Preview...

This formula is used for projects set up with day calendar



Formula to calculate the total duration based on the planned load/mpwr to complete the scope. Decimal fields can be used as input to update multiple activities.

Assign Fields

Formula : Set Duration (Load Mpwr Hour)  From other users

Formula

Duration =

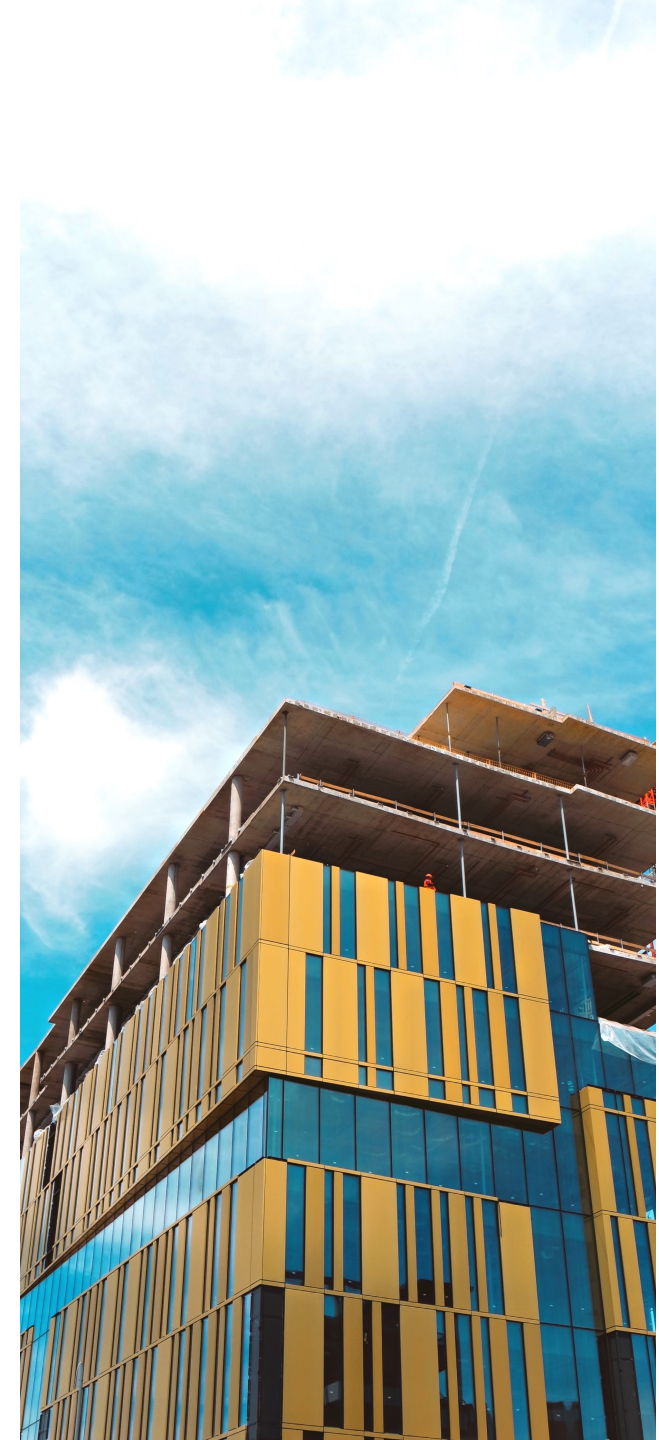
(	Expression	)	Operator
<input type="checkbox"/>	Planned QTY	<input type="checkbox"/>	/
<input type="checkbox"/>	Mpwr	<input type="checkbox"/>	

Duration Format: Days  Use Calendar Calendar : Activity's

Selection  Selected rows

Number of activities to be updated : 9  
Total number of activities in plan : 9

This formula is used for projects set up with hour calendar



Formula to calculate the total duration based on the planned load/mpwr to complete the scope. Decimal fields can be used as input to update multiple activities.

Assign Fields

Formula : Set Duration (Load Mpwr Minute)  From other users New... Save As... Delete

Formula

Duration =

(	Expression	)	Operator
	Planned QTY		/
	Mpwr		*
	60		

Add Row Insert Row Delete Row Clear All Rows

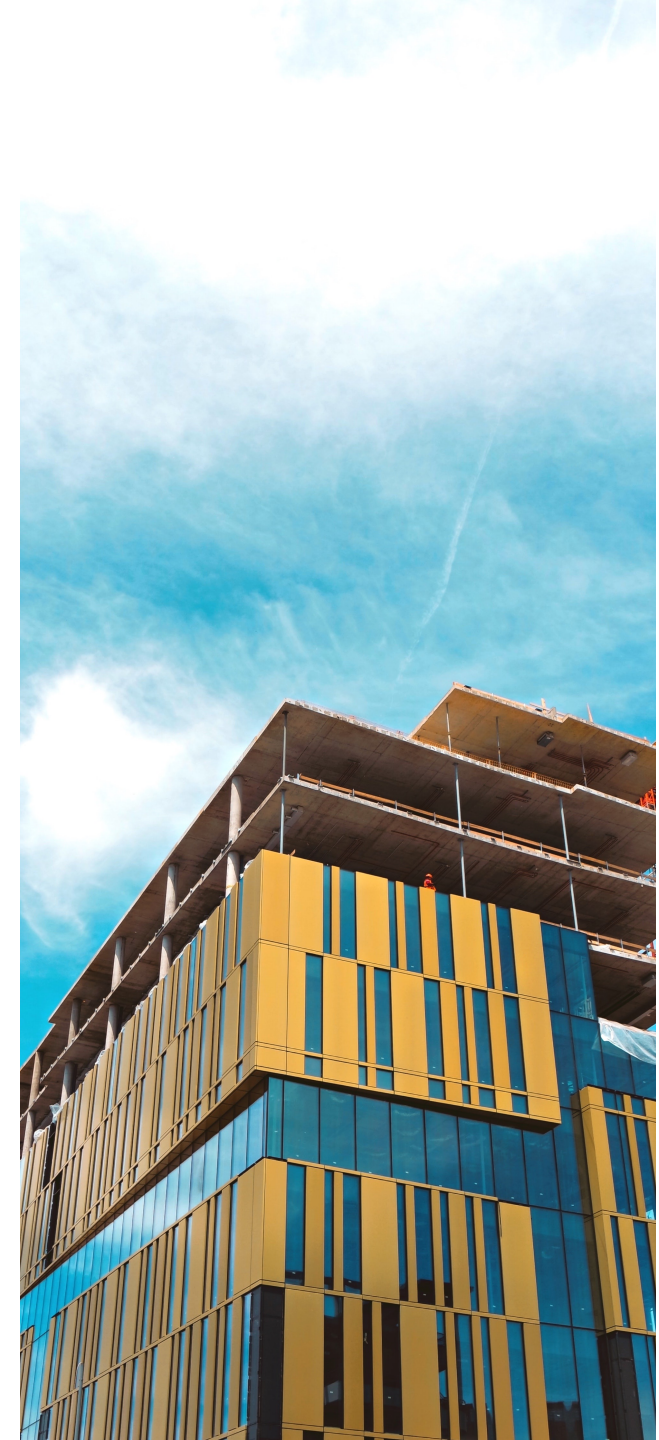
Duration Format: Days  Use Calendar Calendar : Activity's

Selection  Selected rows Filter...

Number of activities to be updated : 9  
Total number of activities in plan : 9

Execute Close Preview...

This formula is used for projects set up with minute calendar



Formula to calculate the total duration based on the planned qty per unit to complete the scope. Decimal fields can be used as input to update multiple activities.

Assign Fields

Formula : Set Duration (Load QTY)  From other users

Formula

Duration =

(	Expression	)	Operator
(	Planned QTY	)	/
	Qty per unit	)	+
	0.5		

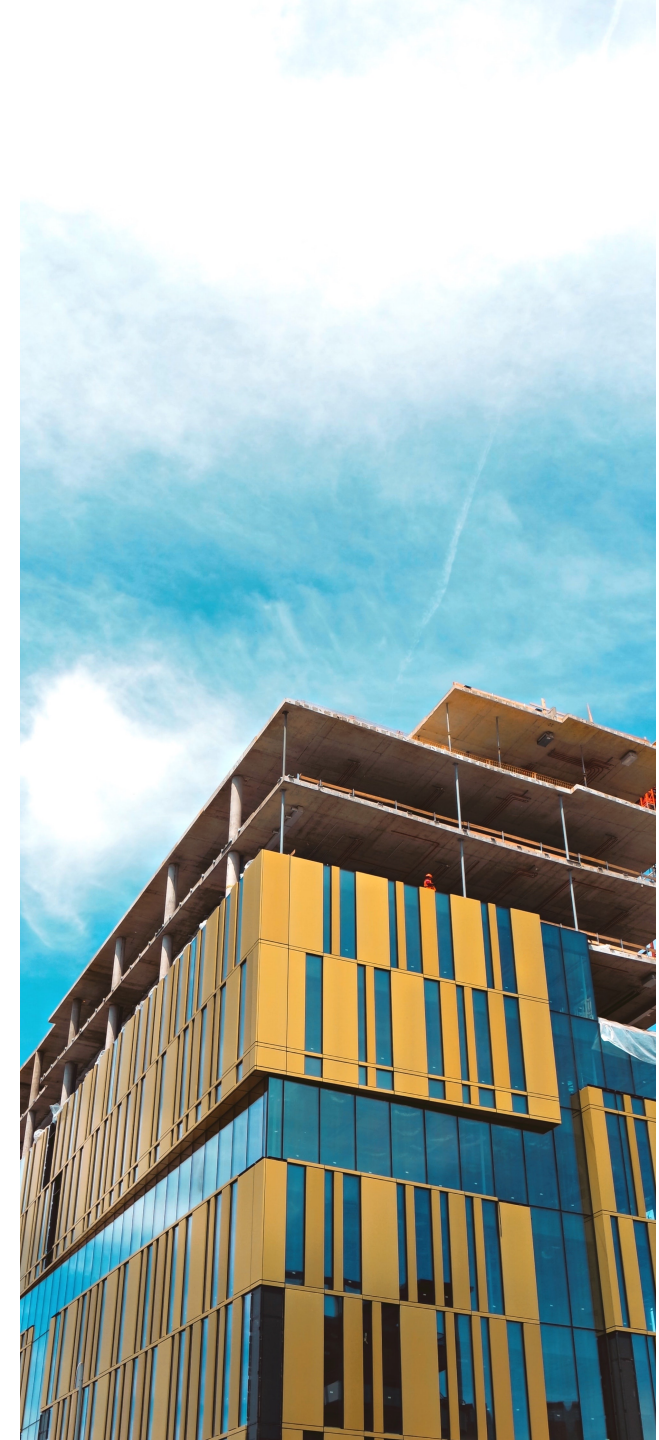
Duration Format: As Formula  Use Calendar Calendar : Activity's

Selection

Selected rows

Number of activities to be updated : 9  
Total number of activities in plan : 9

This formula is used for projects set up with day and hour calendar



Formula to calculate the total duration based on remaining duration input. Duration fields can be used as input to update multiple activities and to utilize the duration format.

Assign Fields

Formula : Set Duration (Rem Dur)  From other users

Formula

Duration =

(	Expression	)	Operator
	Units		/
((	100	)	-
	% Complete (PC)	)	/
	100	)	-
	0.5	)	-

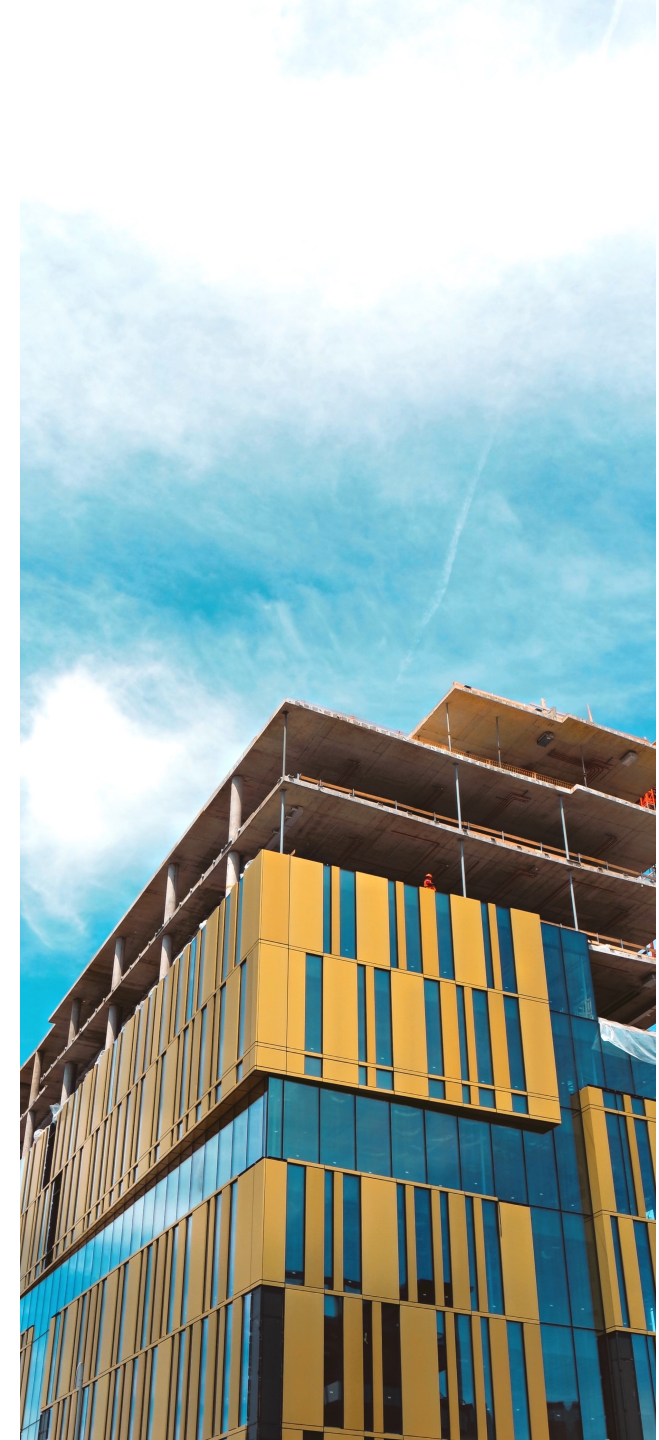
Duration Format: As Formula  Use Calendar Calendar : Activity's

Selection

Selected rows

Number of activities to be updated : 9  
Total number of activities in plan : 9

This formula is used for projects set up with all calendar types. When setting values manually and not using duration fields, the input must be based on the calendar units. When setting up the duration calculation formulas it is possible to select what duration format returned by the formula. This field is locked when a formula is saved. As formula is the default returning a duration without format based on the calendar units.





Thank You.