

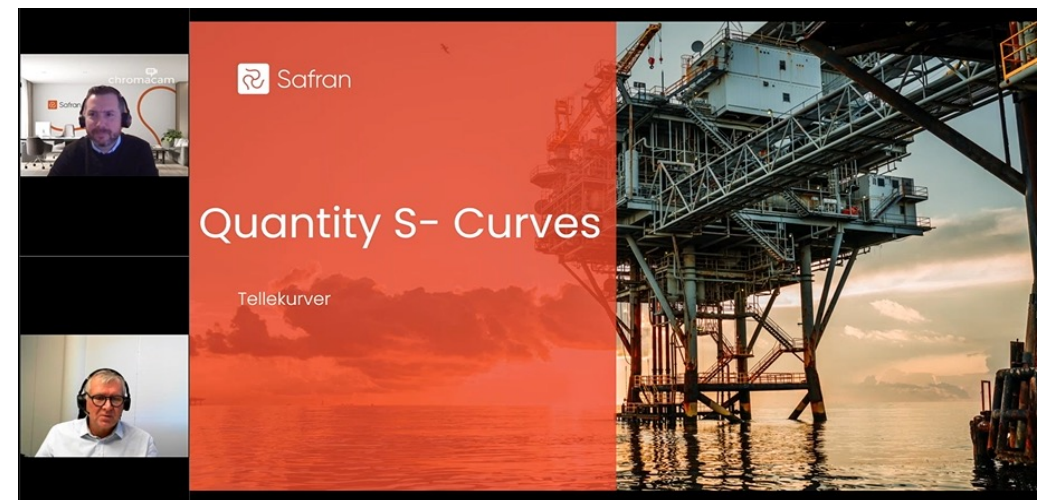
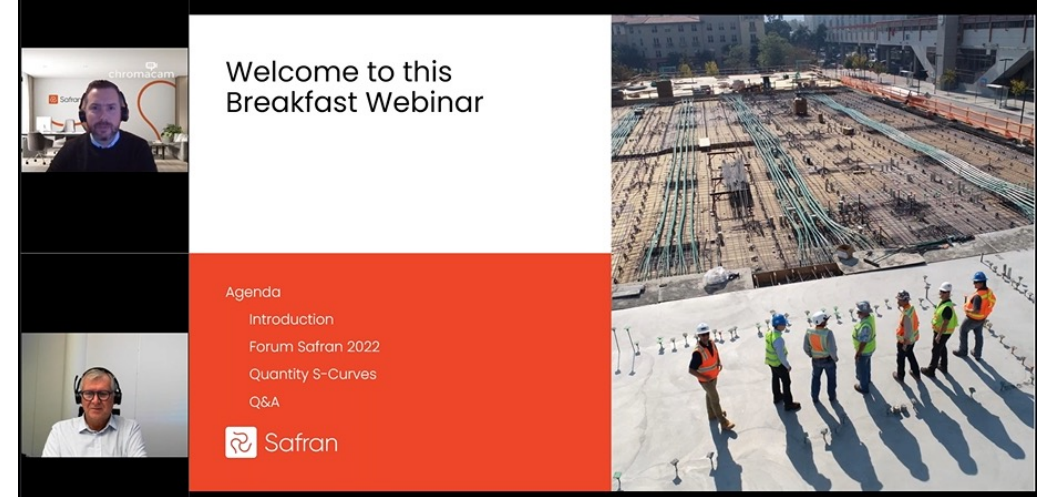


New Feature: Count Activities

Gøril P. Karoliussen | Product Manager Safran Project



How many attended the
last Breakfast Webinar in
September?



Examples of things to count

- No of handovers
- No of completed, upcoming and overdue milestones
- No of activities planned, early and late
- No of activities started, planned started, or to be started
- Logic; number of links – any hotspots?
- Document Schedule, no of IDC, IFC milestones
- Any number (no of documents)
- Hits and Misses

Steps (21.1.20)

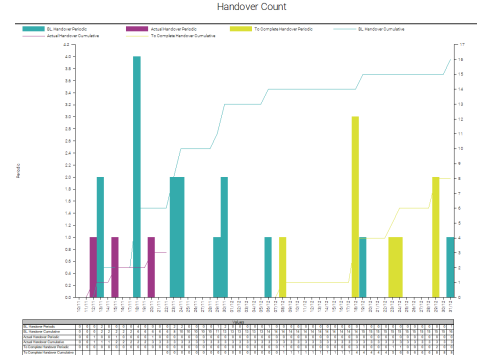
- You need something to count
- You need to define a number field (decimal or Computed)
- You may need a filter
- You set a value to the user field (Assign filed or Formula)
- The Value is often one
- You create an Editor Histogram
- Data Field= your number field
- From Date = Until Date

Steps (22.1.00)

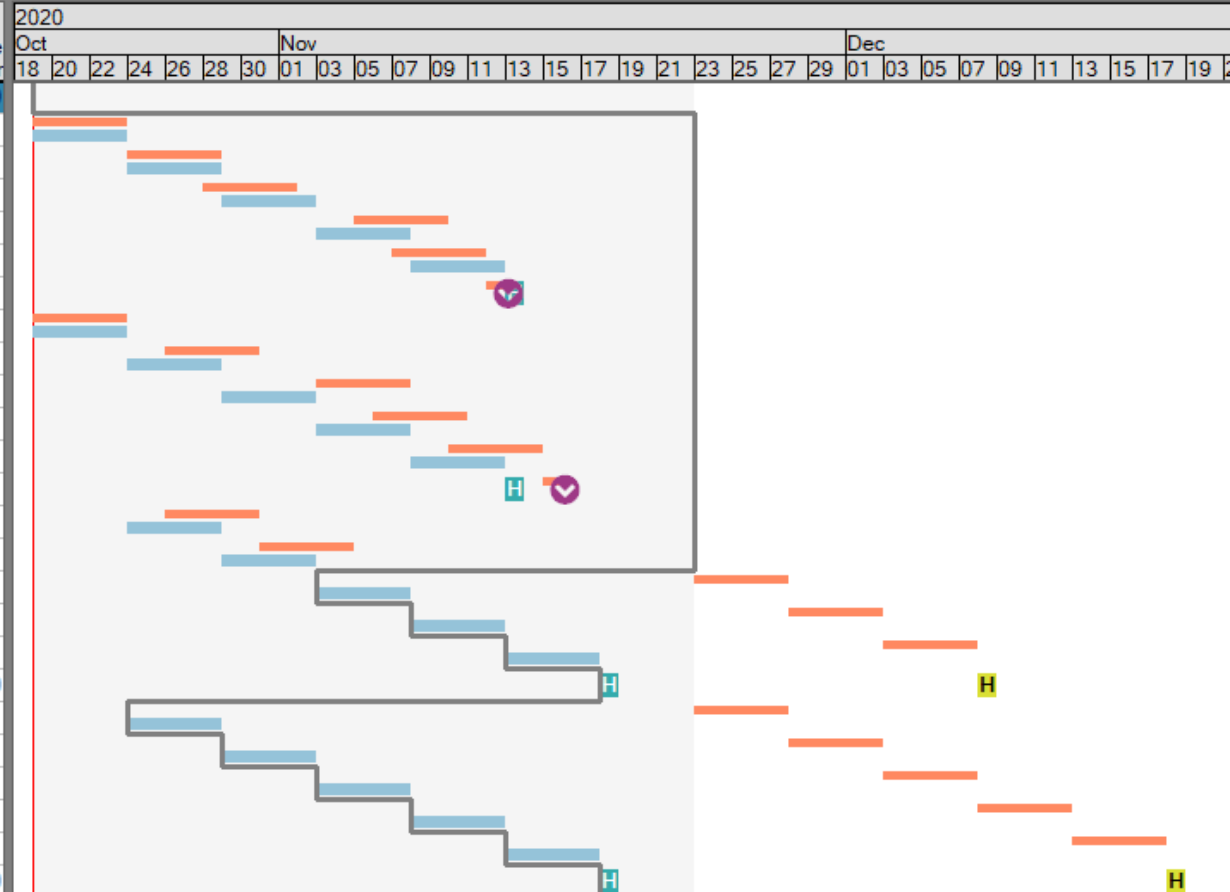
- Identify something that you want to count
- Create an Editor Histogram
- Data Field= Count Activities (+Filter)
- From Date

Computed fields vs. Count Activities

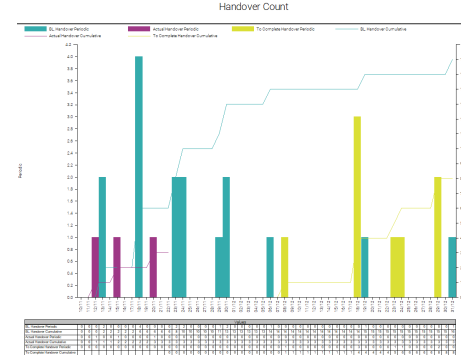
Breakfast Webinar (21.1.20) vs. Forum Safran (22.1.00)



Activity ID	Description	Early Start	Early Finish	Actual %	Current Actual Start	Current Actual Finish	Bl. Handover	Actual Handover	To Complete Handover
Count Activities		19.10.20	31.12.20	0.0	18.10.20		16.0	3.0	13.0
A1	Procurement	19.10.20	23.10.20	100.0	20.10.20	23.10.20			
A2	Engineering	24.10.20	28.10.20	100.0	24.10.20	28.10.20			
A3	Fabrication	29.10.20	02.11.20	100.0	28.10.20	01.11.20			
A4	Installation	03.11.20	07.11.20	100.0	03.11.20	09.11.20			
A5	Comissioning	08.11.20	12.11.20	100.0	09.11.20	11.11.20			
A6	Handover	13.11.20	13.11.20	100.0	12.11.20	12.11.20	1.0	1.0	
B1	Procurement	19.10.20	23.10.20	100.0	18.10.20	23.10.20			
B2	Engineering	24.10.20	28.10.20	100.0	23.10.20	30.10.20			
B3	Fabrication	29.10.20	02.11.20	100.0	02.11.20	07.11.20			
B4	Installation	03.11.20	07.11.20	100.0	07.11.20	10.11.20			
B5	Comissioning	08.11.20	12.11.20	100.0	11.11.20	14.11.20			
B6	Handover	13.11.20	13.11.20	100.0	15.11.20	15.11.20	1.0		
C1	Procurement	24.10.20	28.10.20	100.0	25.10.20	30.10.20			
C2	Engineering	29.10.20	02.11.20	100.0	31.10.20	04.11.20			
C3	Fabrication	03.11.20	07.11.20						
C4	Installation	08.11.20	12.11.20						
C5	Comissioning	13.11.20	17.11.20						
C6	Handover	18.11.20	18.11.20				1.0		1.0
D1	Procurement	24.10.20	28.10.20						
D2	Engineering	29.10.20	02.11.20						
D3	Fabrication	03.11.20	07.11.20						
D4	Installation	08.11.20	12.11.20						
D5	Comissioning	13.11.20	17.11.20						
D6	Handover	18.11.20	18.11.20				1.0		1.0



The Barchart and Filter settings



Activity ID	Description	Actual %	Baseline Early Finish	Current Actual Finish
A1	Procurement	100.0	23.10.20	23.10.20
A2	Engineering	100.0	28.10.20	28.10.20
A3	Fabrication	100.0	02.11.20	01.11.20
A4	Installation	100.0	07.11.20	09.11.20
A5	Comissioning	100.0	12.11.20	11.11.20
A6	Handover	100.0	13.11.20	12.11.20
B1	Procurement	100.0	23.10.20	23.10.20
B2	Engineering	100.0	28.10.20	30.10.20
B3	Fabrication	100.0	02.11.20	07.11.20
B4	Installation	100.0	07.11.20	10.11.20
B5	Comissioning	100.0	12.11.20	14.11.20
B6	Handover	100.0	13.11.20	15.11.20
C1	Procurement	100.0	28.10.20	30.10.20
C2	Engineering	100.0	02.11.20	04.11.20
C3	Fabrication		07.11.20	
C4	Installation		12.11.20	
C5	Comissioning		17.11.20	
C6	Handover		18.11.20	

Filters

Filter: **BL Handover** From: User New... Save As... Rename... Delete

(Field	Operator	Expression)	And/Or
	Description	Contains	handover		

Insert Row Add Row Delete Row Clear All Move Up Move Down Apply OK Cancel

Filters

Filter: **Actual Handover** From: User New... Save As... Rename... Delete

(Field	Operator	Expression)	And/Or
	Description	Contains	handover		AND
	Current Actual Finish	IS NOT	NULL		

Insert Row Add Row Delete Row Clear All Move Up Move Down Apply OK Cancel

Filters

Filter: **To Complete Handover** From: User New... Save As... Rename... Delete

(Field	Operator	Expression)	And/Or
	Description	Contains	handover		AND
	Actual %	<	100		

Insert Row Add Row Delete Row Clear All Move Up Move Down Apply OK Cancel



21.1.20

Computed fields

Userfields

Details | **Userfields** | Access

Reference | Text | Date | Flag | Decimal | Duration | Outline Codes | **Computed**

Field	Label
C1	Bl. Handover
C2	Actual Handover
C3	To Complete Handover

Field No.: 3

Label: **To Complete Handover** **1**

Visible: ☒ Enabled: ☐

Field Type: Decimal

— Link To —

Userfield Set:

Field No.:

Inherit Label: ☐

— Summary/Group Level Display —

☐ None ☒ Apply Function Sum

— Activity Level Data —

☐ Manual Input ☒ Calculated Value **Formula** **2**

Userfield Formula

Userfield:
To Complete Handover

Formulas:

Include Activities	Filter/Formula	Remarks
WHERE	conditions in Filter... 3 met, then perform Formula...	

Filters

Filter: To Complete Handover Periodic From: User New... Save As... Rename... Delete

(Field	Operator	Expression)	And/Or
	Description	Contains	handover		AND
	Actual %	<	100		

Add

Insert Row Add Row Delete Row Clear All Move Up Move Down **4** OK Cancel

21.1.20

Computed fields

Histogram Properties

Name: Count 21.1.20 (SAFRANSA) Reports From: All Users New... Save As... Rename... Delete

Page X Axis Left Axis Right Axis Table/Values Lines Curtains Symbol Legend Header Footer Legend Margins Resource Filter

Background Picture: No Logo Change... Clear Save To DB

Orientation: Portrait Landscape

Paper Size: Letter Frame Color: [Black]

Page On: [] []

Periodic Entries Cumulative Entries Table Entries

Bl. Handover Periodic
Actual Handover Periodic
To Complete Handover Periodic

Name: To Complete Handover Periodic Color: [Yellow]

Legend: To Complete Handover Periodic Pattern: [Yellow]

Data Field: To Complete Handover (Compute 3) 5 Pattern Color: [Black]

Stack On: [] Line Style: []

Group Type: [] Stack Groups... Line Thickness: 2

Graph Type: Histogram Fill Curve: [] Limit From Date: []

Stack Legend: Short Stack - Include <None>: [] Limit Until Date: []

Weight On: [] Value Factor: None

Start Value: [] Include: Orig [] Appr [] Est [] Int [] Sub []

From Date: Current Early Finish

Until Date: Current Early Finish Separation: [] %

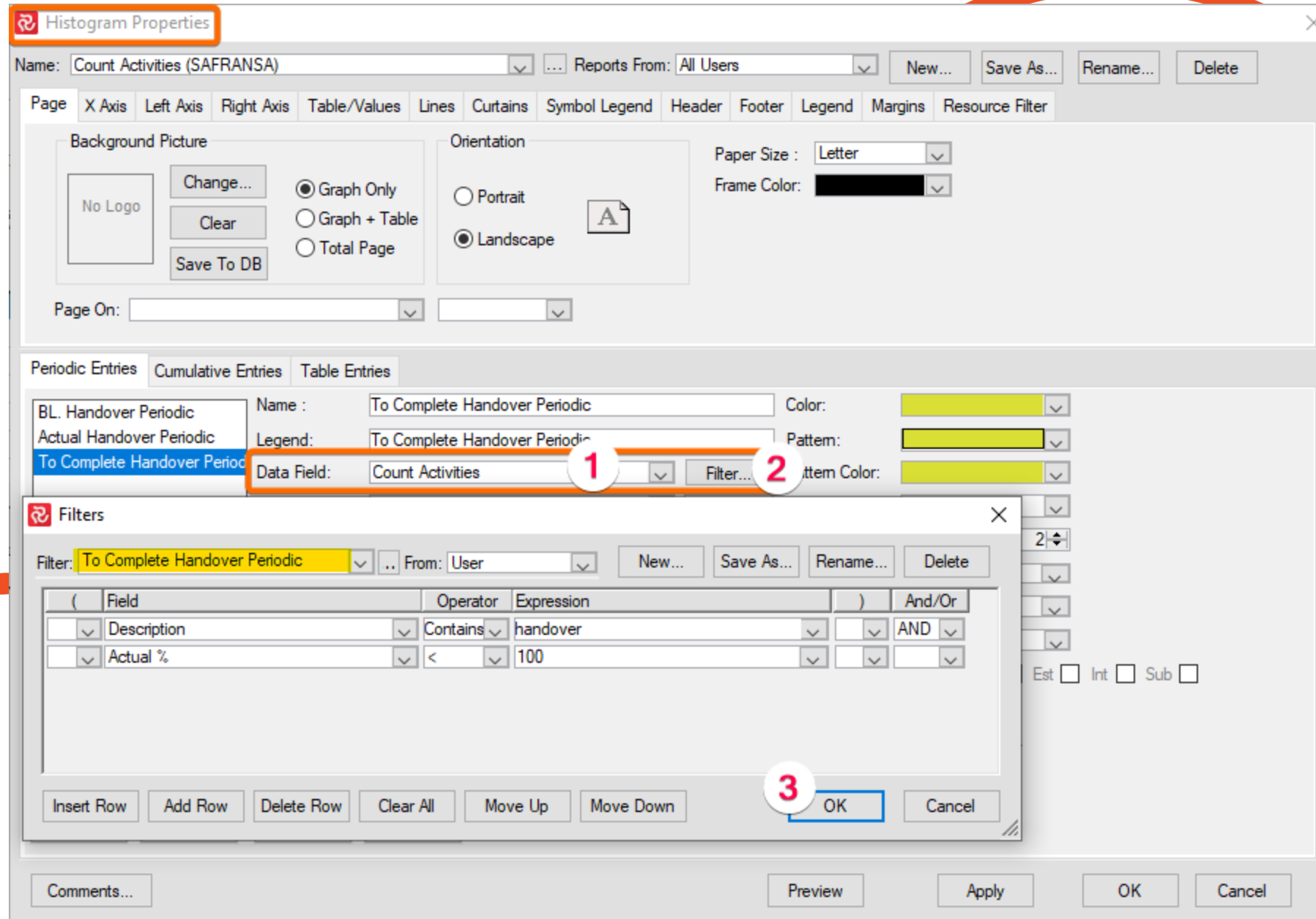
Values: [] Microsoft Sans Serif [] 3 [B] [I] [U] Dec: []

Move Up Move Down New Delete

Comments... Preview Apply OK Cancel

22.1.00

Count Activities



Histogram Properties

Name: Count Activities (SAFRANSA) Reports From: All Users [New...] [Save As...] [Rename...] [Delete]

Page | X Axis | Left Axis | Right Axis | Table/Values | Lines | Curtains | Symbol Legend | Header | Footer | Legend | Margins | Resource Filter

Background Picture

No Logo [Change...] [Clear] [Save To DB]

Orientation

☒ Graph Only
☐ Graph + Table
☐ Total Page

☐ Portrait
☒ Landscape

Paper Size: Letter
Frame Color: [Black]

Page On: [] []

Periodic Entries | Cumulative Entries | Table Entries

BL. Handover Periodic
Actual Handover Periodic
To Complete Handover Periodic

Name: To Complete Handover Periodic Color: [Yellow]
Legend: To Complete Handover Periodic Pattern: [Yellow]
Data Field: Count Activities (1) Filter... (2) Pattern Color: [Yellow]

Filters

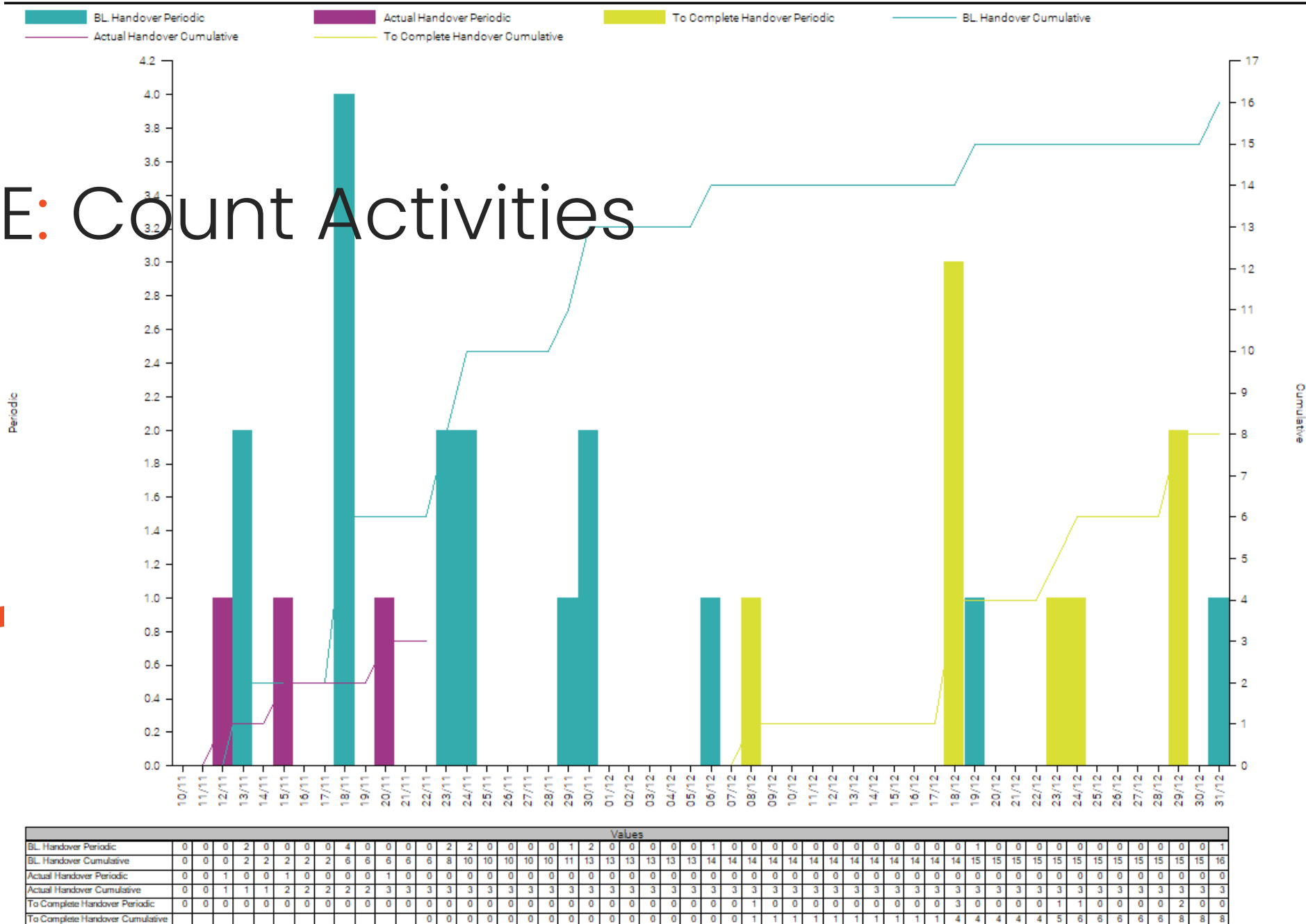
Filter: To Complete Handover Periodic From: User [New...] [Save As...] [Rename...] [Delete]

(Field	Operator	Expression)	And/Or
	Description	Contains	handover		AND
	Actual %	<	100		

[Insert Row] [Add Row] [Delete Row] [Clear All] [Move Up] [Move Down] (3) [OK] [Cancel]

Comments... [Preview] [Apply] [OK] [Cancel]

BE Histogram





Thank You.