

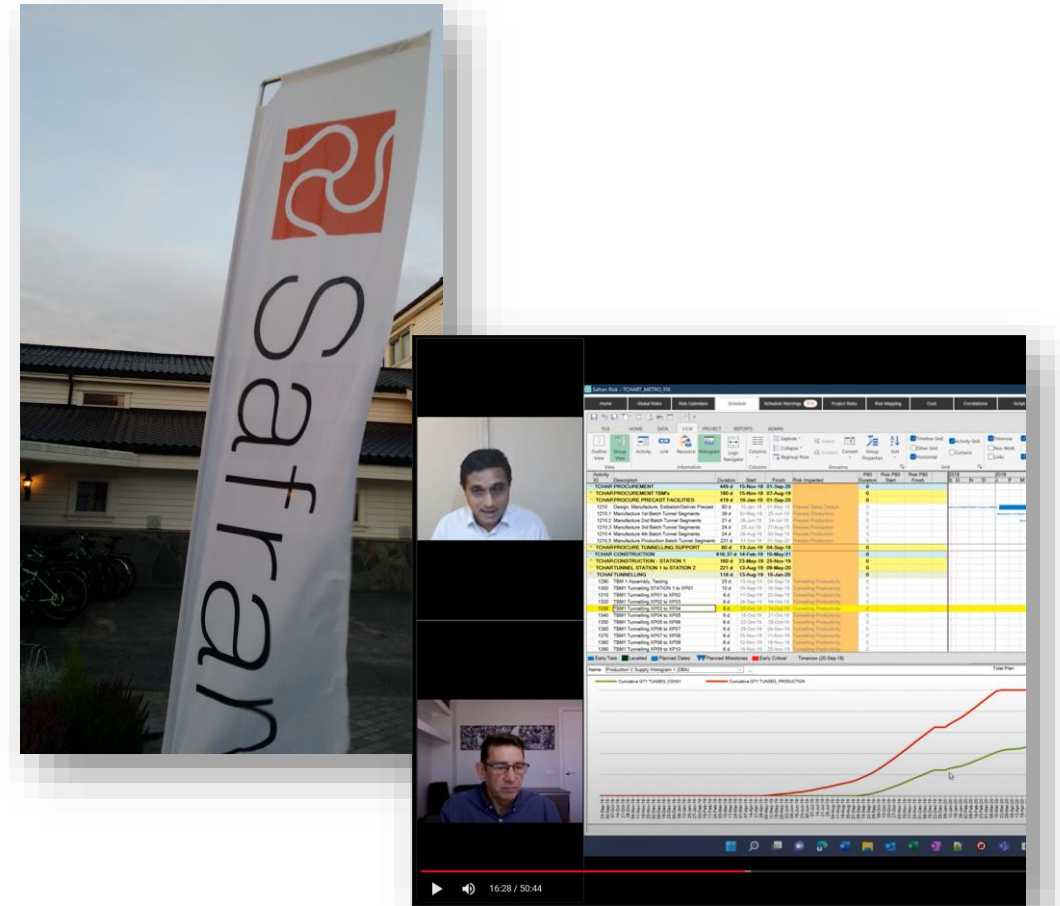
# Beyond the P Dates

# Background

## About Me

Civil Engineer and certified AACE Planning and Scheduling Professional with 20+yrs in Project planning and controls

Independent Consultant based in Sydney, Australia. Director, Risk Practice **Allinno** & Co-Founder of Turbo-Chart



# Allinno and Safran

Allinno is fascinated by technological innovation and the enabling power it has for organisations to transform their ways. Our heritage is helping large enterprises gain better outcomes from information technology.

Allinno Pty Ltd is the Australian and New Zealand representative for Safran Risk, and clients include:



Antarctica  
New Zealand



TransGrid

JOHN  
HOLLAND



Telco  
Authority



FZA



E3 Advisory



What's Critical



Link Alliance

WEST GATE TUNNEL AMD Group  
PROJECT



Cross  
Yarra  
Partnership

AMD



MITSUI E&P  
Australia



MAJOR ROAD  
PROJECTS  
VICTORIA

Sempac

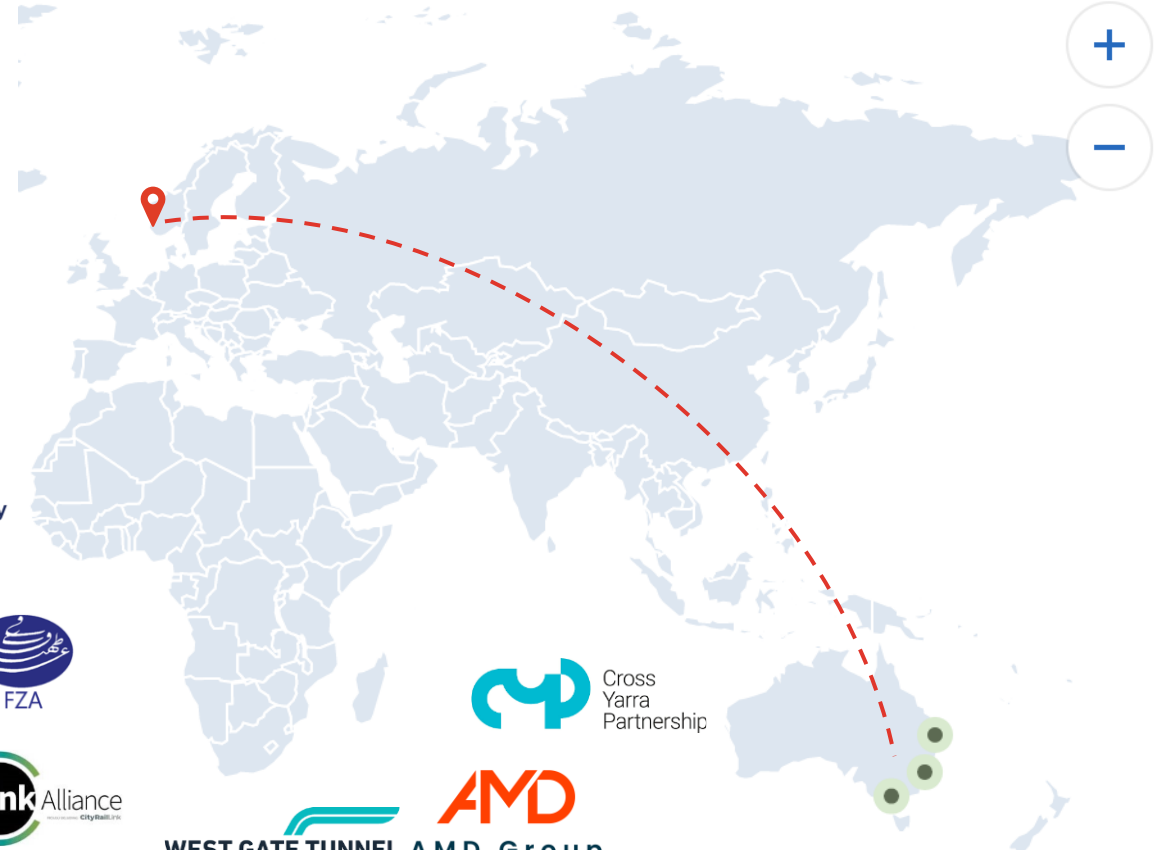
gba



NORTH  
EASTLINK  
PROJECT

MCCONNELL  
DOWELL  
CREATIVE CONSTRUCTION™

Safran



# Why Schedule Risk Analyses?

---

## Outcomes

- Identify driving risks
- Changes to critical path(s)
- Schedule robustness
- Challenge or verify assumptions
- Degree of confidence of achieving key milestones
- Date for a selected degree of confidence



# Demonstrations

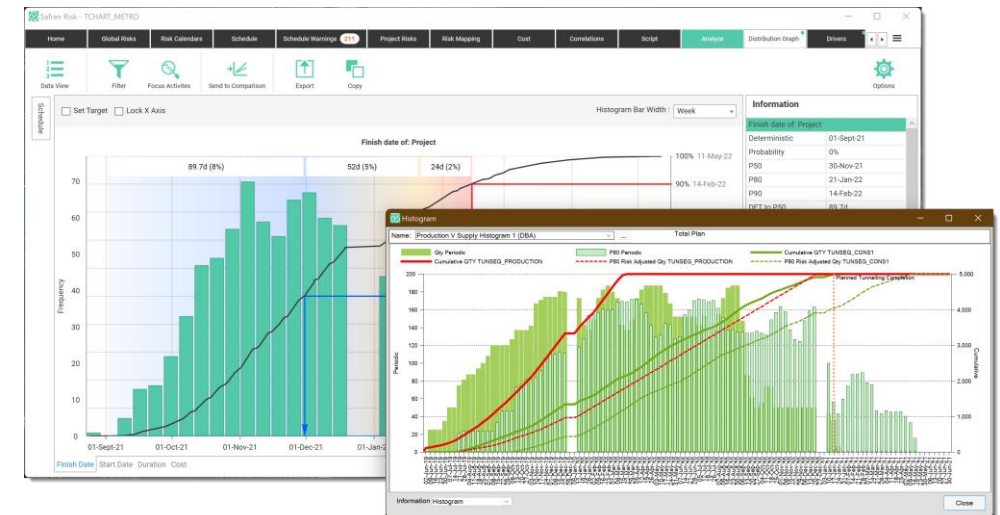
Safran Risk's unique scheduling capabilities

## Scenario 1 – Production Rates (supply & demand)

- As Planned Production vs Consumption
- Production only Risk
- Combined Risk (All risks on Project)

## Scenario 2 – Limited Resources (resource leveling)

- As Planned
- Risk Adjusted As Planned
- Levelled Resources
- Risk Adjusted Levelled Resources





# Scenario 1 – Supply & Demand

---

Need to model precast segment supply against Tunnel Boring Machine (TBM) demand.

Also need to stress test both supply and demand to ensure the TBM is never halted, awaiting precast segments.

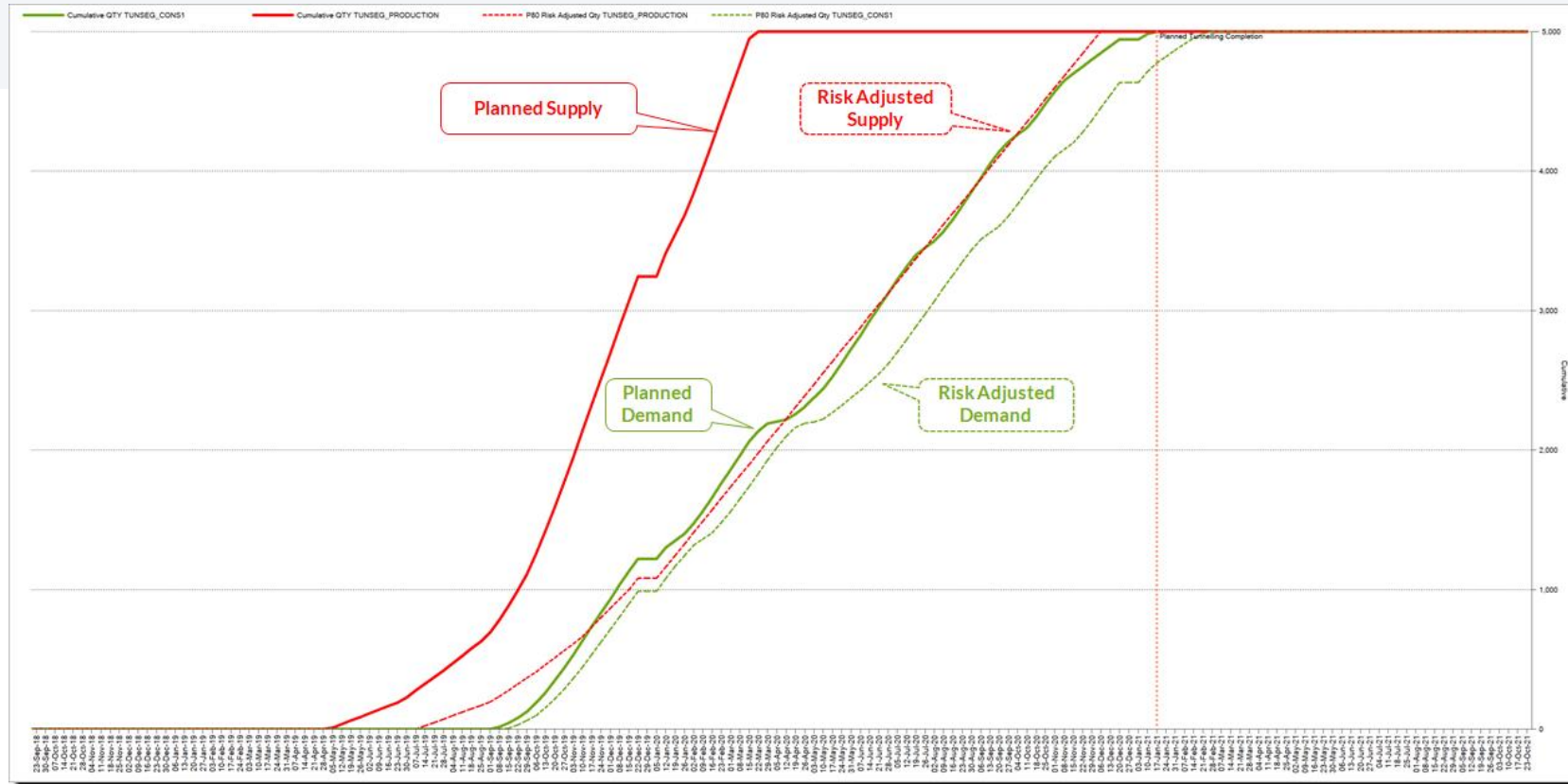


# TBM Segments



# Executive Report

## Segment Supply & Demand at P80



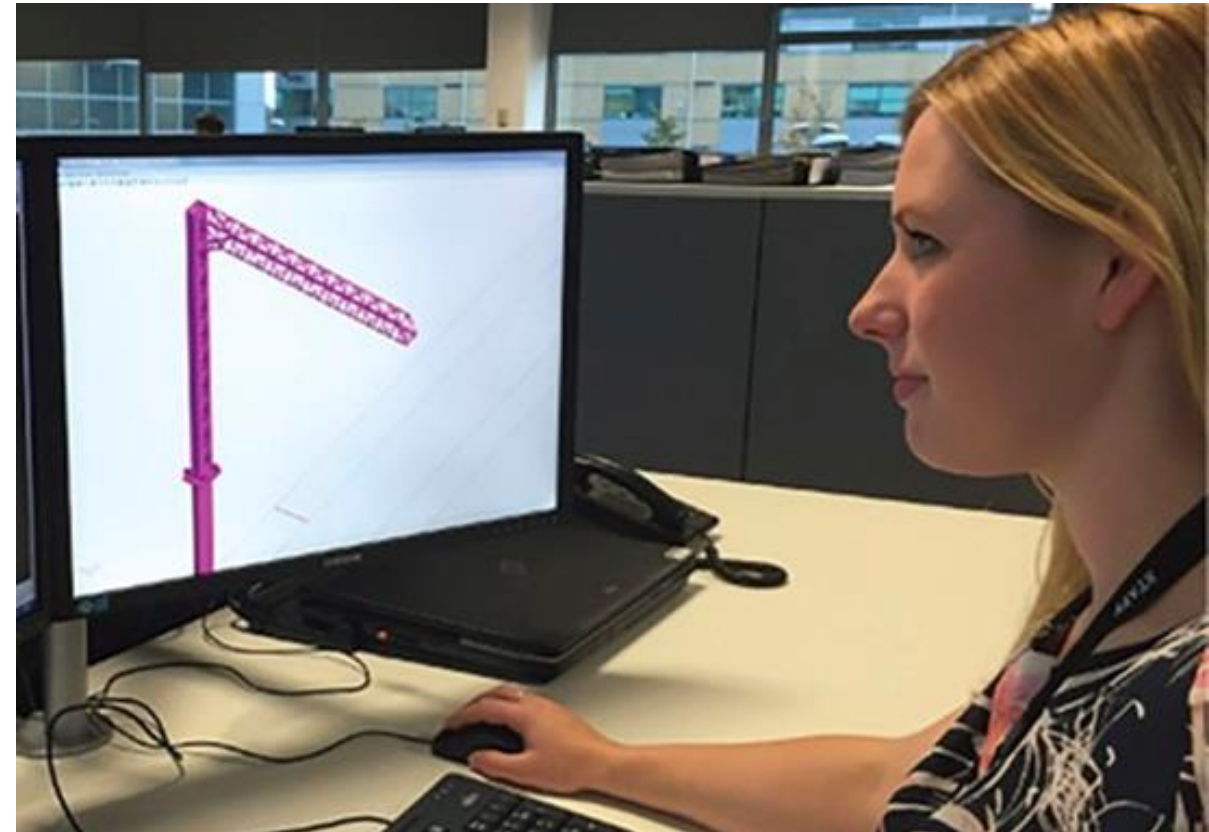


# Scenario 2 – Limited Resources

---

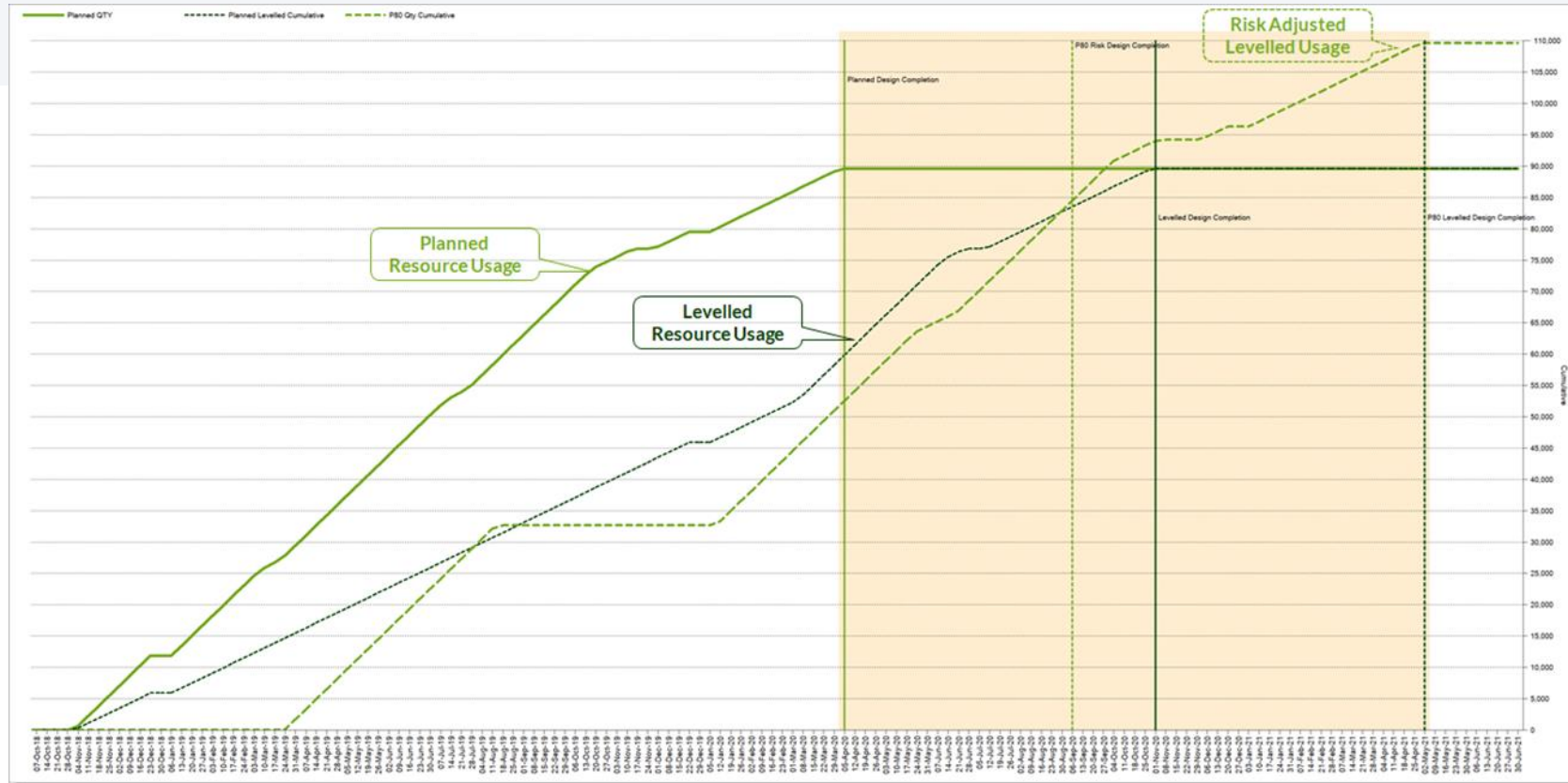
Need to replan (level) due to a projected shortage of design staff.

Also need to stress test the plan to see the combined effects of resource shortages and risks.



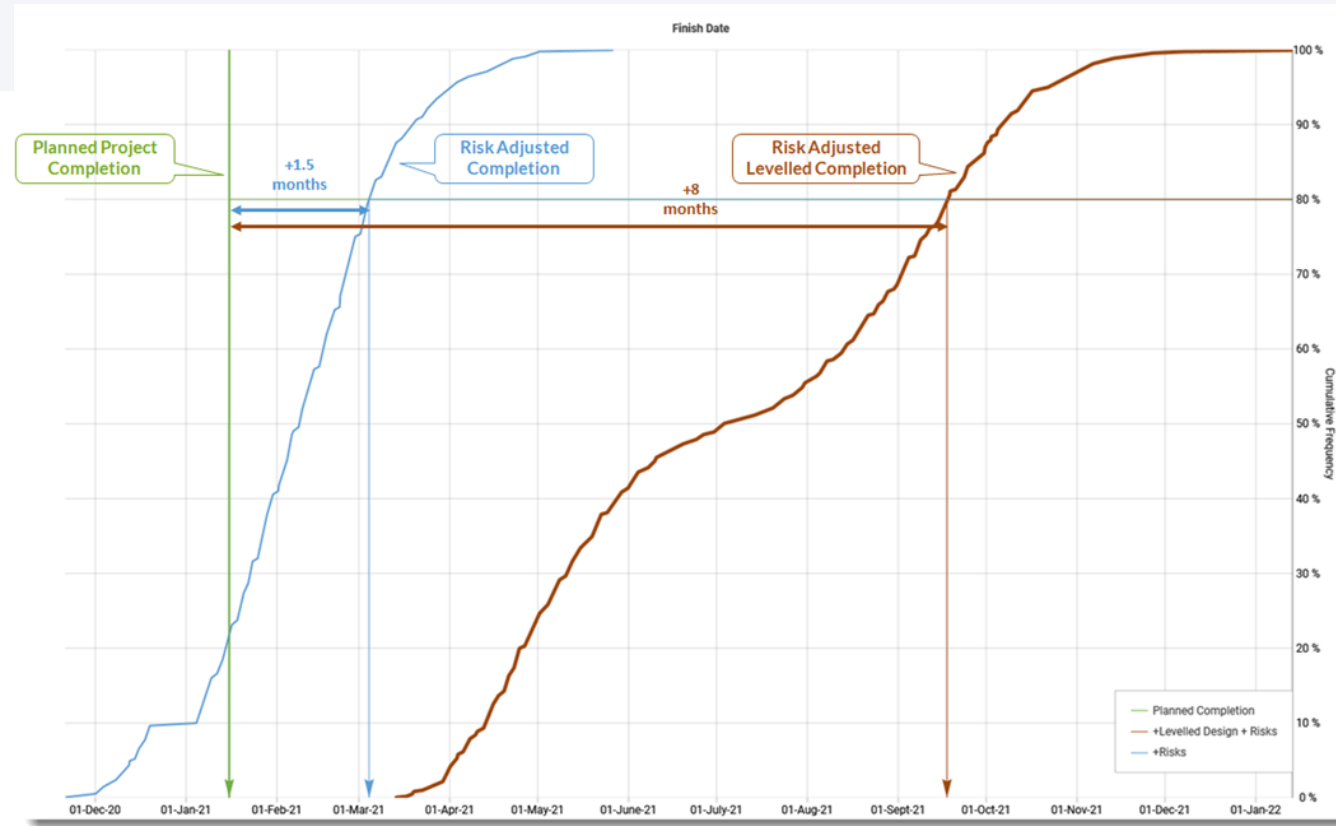
# Executive Report

## Designer Shortage at P80



# Executive Report

## Project Completion at P80



# Beyond P Dates

---

## Outcomes

- Identify driving risks
- Changes to critical path(s)
- Schedule robustness
- Challenge or verify assumptions
- Degree of confidence of achieving key milestones
- Date for a selected degree of confidence
- **Beyond the P Dates**







Thank You.