

Use of Safran API in integrated Planning

Datasource, work process and tools

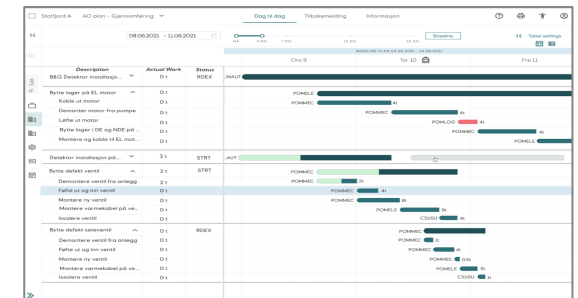
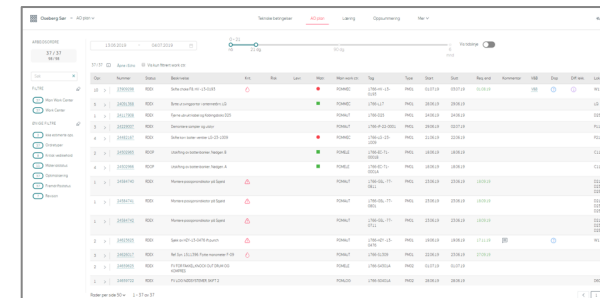
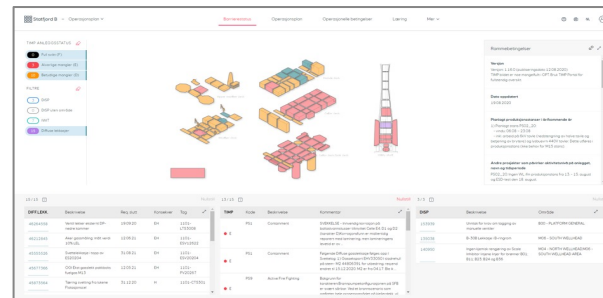


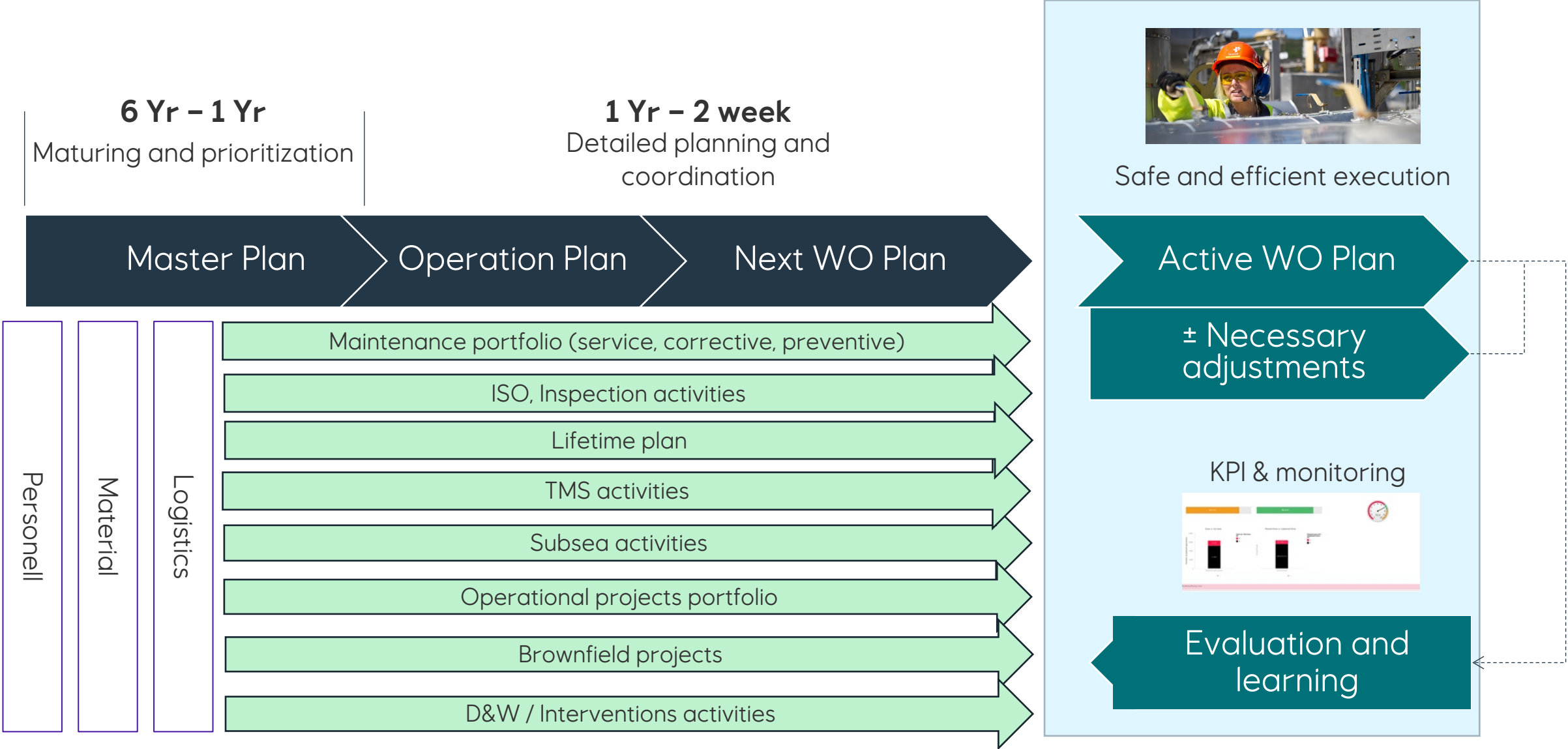
Establish masterplan

Establish operation plan

Prepare workorder plan

Execute work order plan





OPS Innmelding

New Activity

Overview

Cancel

Create

Activity information

Activity description *

Start date *

Duration *

SAP workorder

Project/Task

Choose... x v

Risk and coordination

Risk type *

Choose... x v

Risk input from task owner *

Coordination *

☒ Yes
 ☐ No

☐ Need for extra logistics ?

Responsibility

Responsible onshore *

Search... v

Responsible offshore *

Choose... x v

Vendor *

Name of supplier

Facility information

Area *

Choose... x v

Condition in facility *

Choose... x v

System *

Choose... x v

SAP revision code

Choose... x v

Progress

Percentage complete *

☒ In progress
 ☐ Completed
 ☐ Cancelled^Q

Estimate

☒ Number of personnel

☐ Estimate in hours

☐ Loss

Emission to external environment

Use of Safran API in integrated Planning

Anne Martha Bjørnsson Bø
Principal Engineer Planning O&M

© Equinor ASA

This presentation, including the contents and arrangement of the contents of each individual page or the collection of the pages, is owned by Equinor. Copyright to all material including, but not limited to, written material, photographs, drawings, images, tables and data remains the property of Equinor. All rights reserved. Any other use, reproduction, translation, adaption, arrangement, alteration, distribution or storage of this presentation, in whole or in part, without the prior written permission of Equinor is prohibited. The information contained in this presentation may not be accurate, up to date or applicable to the circumstances of any particular case, despite our efforts. Equinor cannot accept any liability for any inaccuracies or omissions.